

Mastromatteo's lab features

At a glance

Reactor 6 for Pd-H tests

Photos of the chamber filled with H₂ at an absolute pressure of 1 bar and with leaning on the glass window an optical system for enlargement of the laser beam to about 1 cm²



He-Ne laser

Optics

Chamber bottom with sample holder



Photo of the reactor bottom where the sample with a thin Palladium film is placed using a copper wire fastener

Oxidized silicon chip on which it is deposited a layer of palladium 250 nm thick; the size of the chip are: width 1mm, length 28 mm



First experiment results:

EDX in an unchanged area (green window)

Acquisition conditions

Acquisition time (s) 40.0

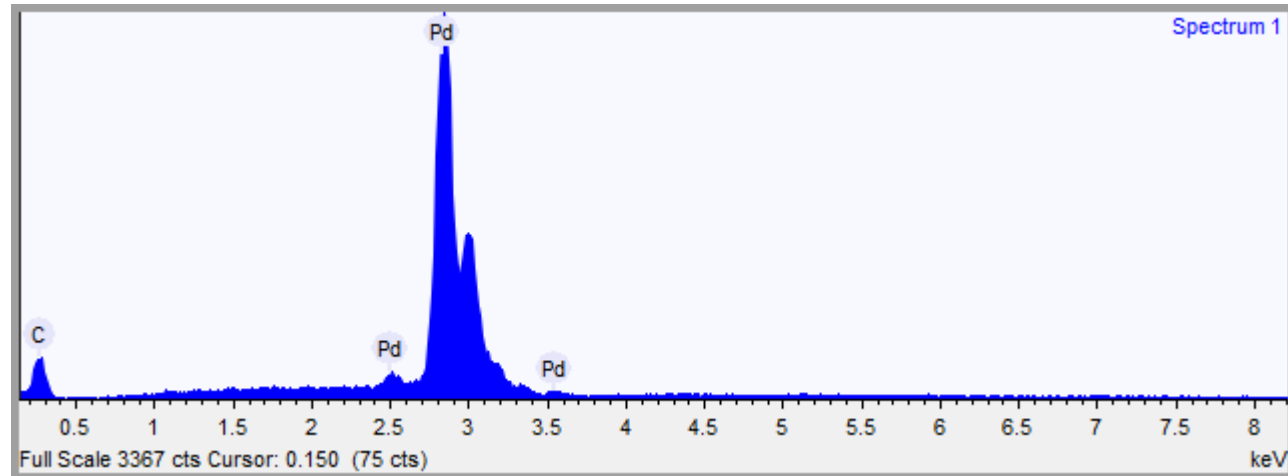
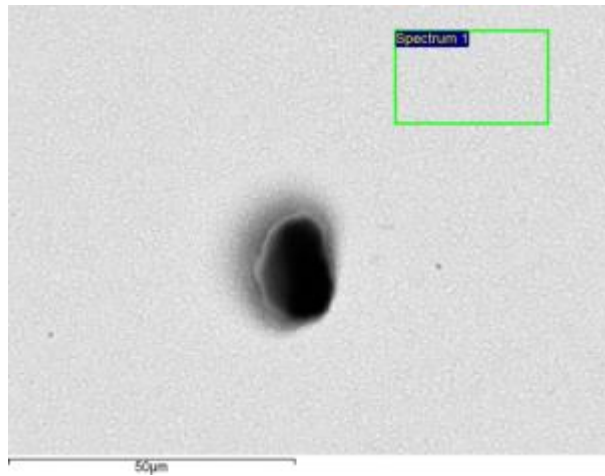
Process time 4

Accelerating voltage (kV)

15.0

Electron Image

Image Width: 104.8 μm

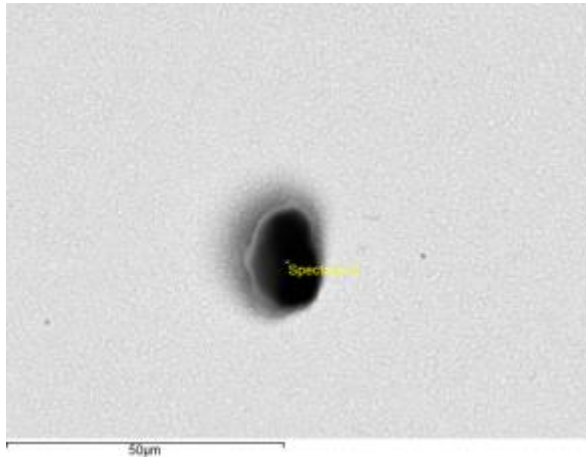


First experiment results:

EDX in a probable reaction area

Electron Image

Image Width: 104.8 μm



Acquisition conditions

Acquisition time (s) 40.0

Process time 4

Accelerating voltage (kV) 15.0

15.0

